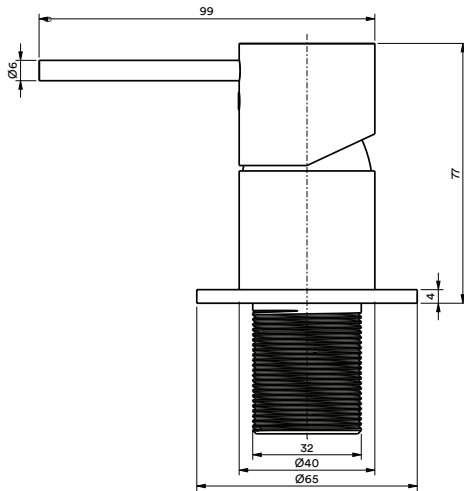


TECHNICAL SPECIFICATIONS



PRODUCT

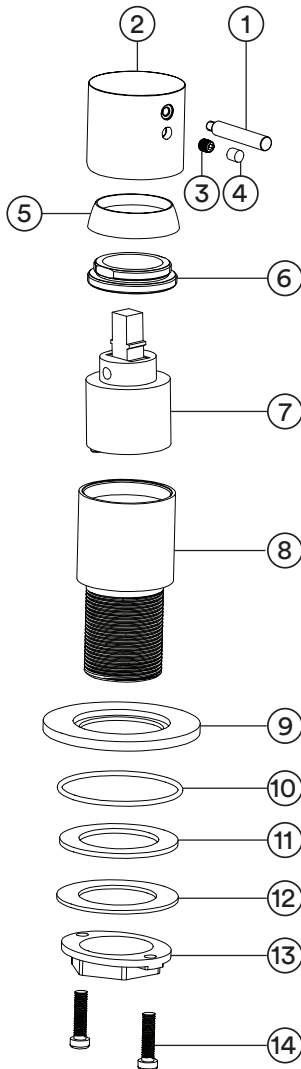


STEEL

MIX - SS - 007

Deck Mounted Mixer

DETAILED ASSEMBLY



No	Description	Qty	Material
1	Pin Handle	1	316L
2	Handle	1	316L
3	Screw	1	316L
4	Rubber Plug	1	NBR
5	Cap	1	326L
6	Cartridge Cap	1	316L
7	Cartridge 35D-1	1	Assembly
8	Body	1	316L
9	Base	1	316L
10	O-Ring	1	NBR
11	Rubber Gasket	1	NBR
12	SS Gasket	1	SUS-304
13	Lock Nut	1	SUS-304
14	Screw	2	SUS-304

FEATURES

- 15 year warranty.
- 316 stainless steel.
- European cartridge.
- Flow rate: 22 Litres per minute @ 3 bar pressure.
- Flexihose sold separately.



WARRANTY

Refer to joansa.co.za for warranty terms & conditions.

CARE

Preparation:

Apply copper slip lubricant to prevent seizing of threaded fasteners.

Cleaning:

- Remove dirt using clean water and a soft cotton cloth.
- Clean the stainless steel surface with:
 - Gentle liquid detergent.
 - Colourless glass cleaner.
 - Non-abrasive polishes.
- Dry and remove all cleaning material with a soft cotton cloth.

CERTIFICATION

JASWIC APPROVED.
SABS TESTED & APPROVED.

Joan

Stainless Steel
with a conscience

+27 (0)21 510 0489
30 Royal Road, Maitland,
Cape Town. 7405. South Africa

FLOW RATE

