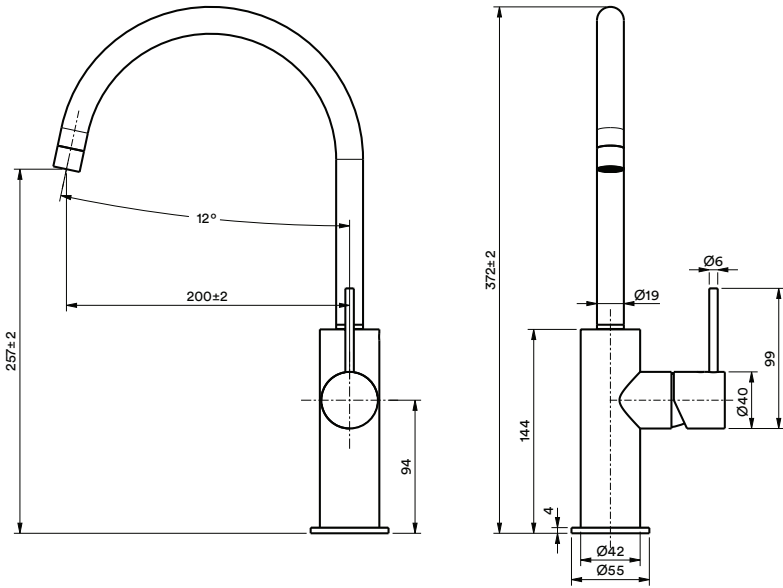


TECHNICAL SPECIFICATIONS



PRODUCT

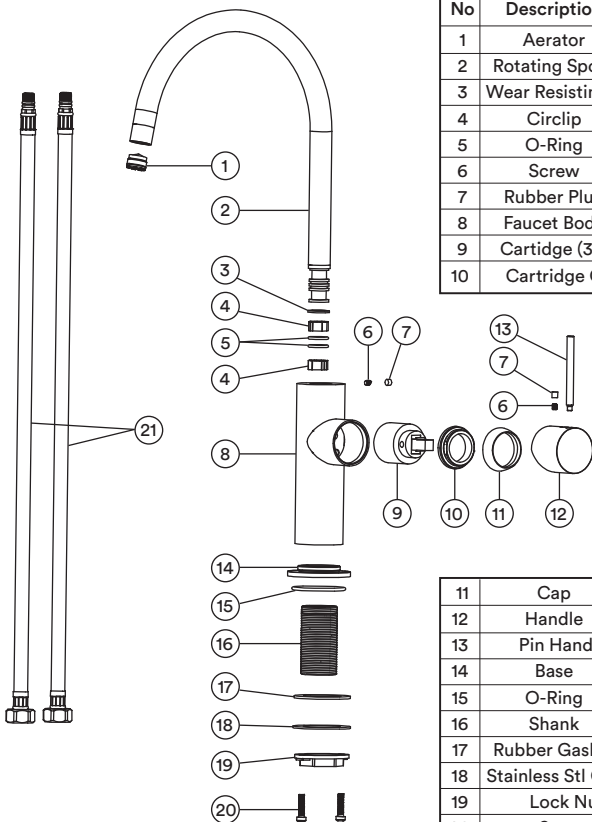


STEEL

MIX - SS - 001

Kitchen Mixer

DETAILED ASSEMBLY



No	Description	Qty	Material
1	Aerator	1	ABS
2	Rotating Spout	1	316L
3	Wear Resisting Ring	1	POM
4	Circlip	2	POM
5	O-Ring	2	NBR
6	Screw	2	316L
7	Rubber Plug	2	NBR
8	Faucet Body	1	316L
9	Cartridge (35D-1)	1	Assembly
10	Cartridge Cap	1	316L

11	Cap	1	316L
12	Handle	1	316L
13	Pin Handle	1	316L
14	Base	1	316L
15	O-Ring	1	NBR
16	Shank	1	SUS-304
17	Rubber Gasket	1	NBR
18	Stainless Stl Gasket	1	SUS-304
19	Lock Nut	1	SUS-304
20	Screw	2	SUS-304
21	Inlet Hose	2	Assembly

FEATURES

- 15 year warranty.
- 316 stainless steel.
- European cartridge.
- Flow rate: 15 Litres per minute @ 3 bar pressure.



WARRANTY

Refer to joansa.co.za for warranty terms & conditions.

CARE

Preparation:

Apply copper slip lubricant to prevent seizing of threaded fasteners.

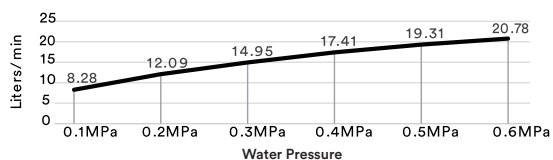
Cleaning:

- Remove dirt using clean water and a soft cotton cloth.
- Clean the stainless steel surface with:
 - Gentle liquid detergent.
 - Colourless glass cleaner.
 - Non-abrasive polishes.
- Dry and remove all cleaning material with a soft cotton cloth.

CERTIFICATION

JASWIC APPROVED.
SABS TESTED & APPROVED.

FLOW RATE



Joan

Stainless Steel
with a conscience

+27 (021) 510 0489
30 Royal Road, Maitland,
Cape Town. 7405. South Africa