



Stainless steel tapware
with a clear conscience.

If you have questions regarding the installation
or operation, do not hesitate to reach out to the
Technical Service department.

(021) 510-0489
www.joansa.co.za

Care and Maintenance

- To maintain the brightness of your mixer, clean it regularly.
- Wash the mixer with clean water and dry it with a soft cotton cloth.
- To avoid damaging the surface, do not use polishing powders or cleaning agents that contain coarse particles.
- Avoid using acidic detergents, as they may cause corrosion.

Cleaning Procedure

- Use clean water and a soft cloth to remove dirt.
- Use any of the following to clean the surface:
 - Gentle liquid detergent
 - Colourless glass cleaner
 - Non-abrasive polishes
- Ensure all cleaning material is removed and dry the mixer with a soft cotton cloth.

All manuals and documents for the product must be handed to the end user, or liability may be restricted. Installation must be performed by a certified plumber, following national regulations and directives of the local water supply authorities. Compliance with local accident prevention laws is of utmost importance.

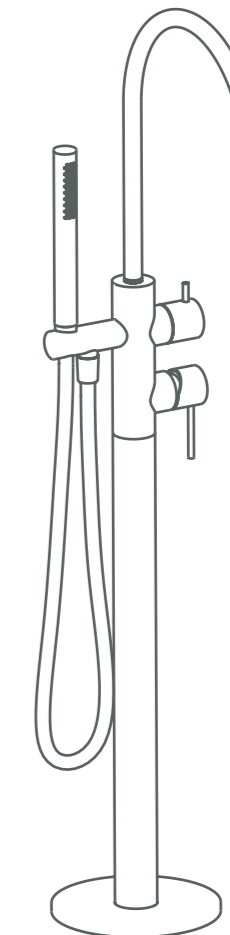


Bath Mixer Freestanding
Extended Spout.

MIX-SS-006 & CON-SS-003

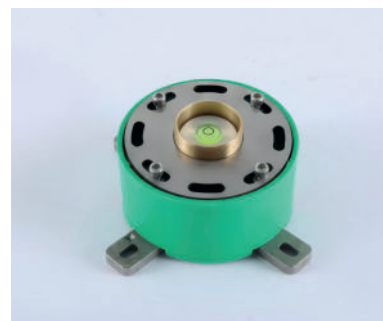
Installation Guide

STEEL



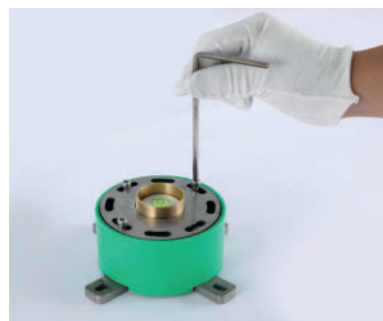
Installation Steps

1



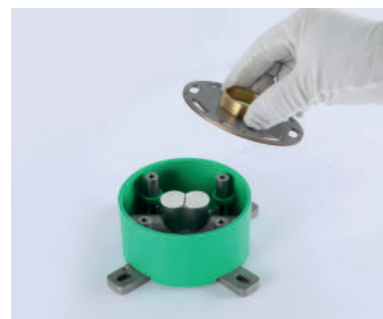
Place the concealed part into the floor below tile, ensure to use the Min/Max Levels. Connect the Hot and Cold water to marked inlets. Ensure to position the arrow facing the bath.

2



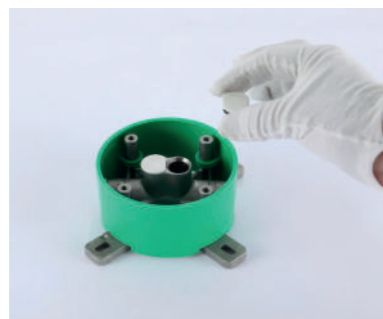
Unscrew the Stainless steel plate from the concealed base. Using the correct tools given so as not to strip the bolts.

3



Remove the plate to expose the body of the concealed unit.

4



Ensure the white plugs are use when doing a pressure test. Also make sure to secure the stainless steel plate when doing the actual pressure test.

5



Ensure to flush water pipes before connecting the mixer, to remove all sediment and sludge. Connect the water pipes given to the bath mixer body, ensuring to note Hot and Cold.

6



Make sure the connection is done correctly for no leaks.

7



Connect the base body of the mixer to the top part, ensure to use copper slip. To prevent any ceasing of connection.

8



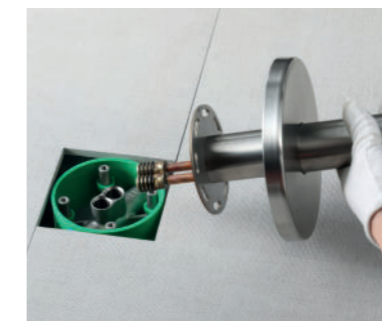
Install the Cover Plate to the base of the mixer.

9



Connect the base of the mixer to the plate of the concealed part by screwing it into the body.

10



Insert the hot and cold connections into the correct points on the concealed box. Make sure this connection is tight to prevent any leaking.

11



Tighten the stainless steel plate to the base correct with the correct tools.

12



Connect the mixer to the base, there's a 90 degree tolerance to move the mixer into position. If you require more then this the unit has not been installed correctly.

Read installation guide and adhere to all instructions.

Installation Instructions

- Check parts against the product parts list. Contact the distributor if any parts are missing.
- Ensure that the product matches the description on the box.
- The body has been tested by the factory. Do not disassemble it.
- Connect the left side to the hot water supply and the right side to the cold water supply.
- Clean any impurities and sludge from the inlet water pipes before assembly to ensure proper functioning.
- Check for any leaks after assembly.
- The medium temperature must not exceed 60°C.
- Recommend Flow Pressure should be 3 bar (including cold water pressure).
- When tightening the connecting nut, do not exceed 10 Nm.
- Avoid bending the hose excessively to prevent deformation after installation.
- If mixer is installed with a continuous flow geyser, the minimum flow pressure of the unit should be the suggested 3 bar.
- Apply copper slip lubricant to prevent seizing of threaded fasteners.