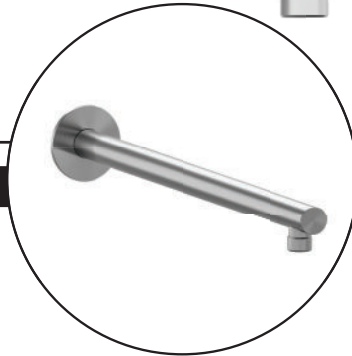


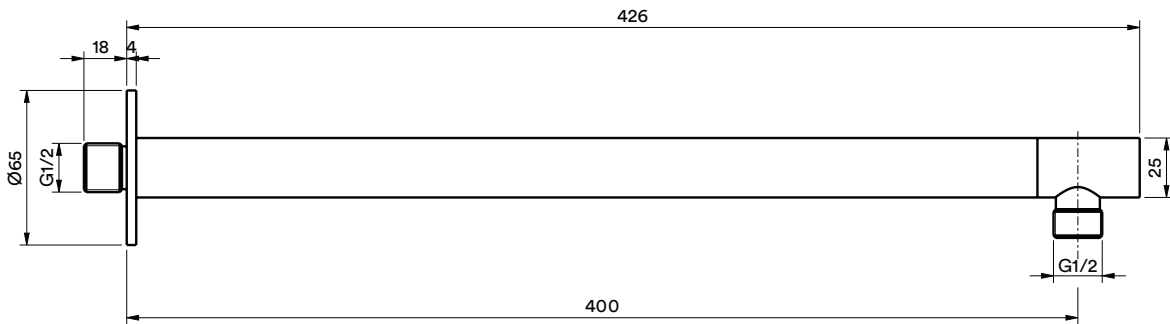
STEEL

ARM - SS - 002 Wall Shower Arm - 400mm

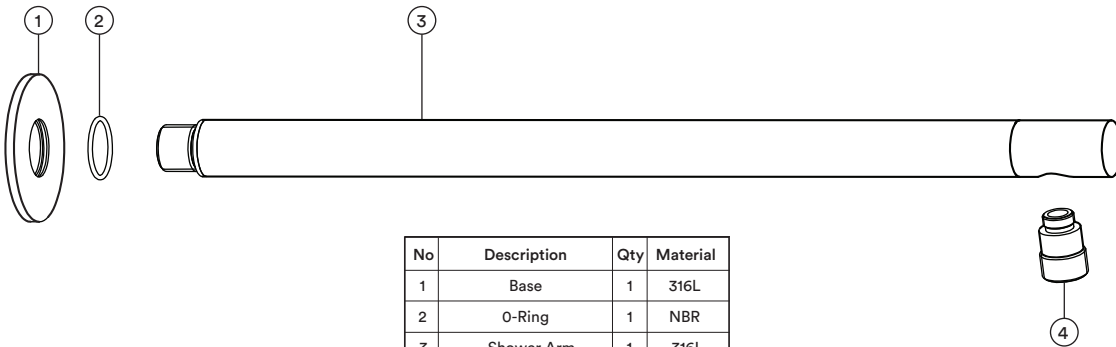
PRODUCT



TECHNICAL SPECIFICATIONS



DETAILED ASSEMBLY



No	Description	Qty	Material
1	Base	1	316L
2	O-Ring	1	NBR
3	Shower Arm	1	316L
4	Connector	1	316L

FEATURES

- 15 year warranty.
- 316 stainless steel.



WARRANTY

Refer to joansa.co.za for warranty terms & conditions.

CARE

Preparation:

Apply copper slip lubricant to prevent seizing of threaded fasteners.

Cleaning:

- Remove dirt using clean water and a soft cotton cloth.
- Clean the stainless steel surface with:
 - Gentle liquid detergent.
 - Colourless glass cleaner.
 - Non-abrasive polishes.
- Dry and remove all cleaning material with a soft cotton cloth.



**Stainless Steel
with a conscience**

+27 (0)21 510 0489
30 Royal Road, Maitland
Cape Town. 7405. South Africa